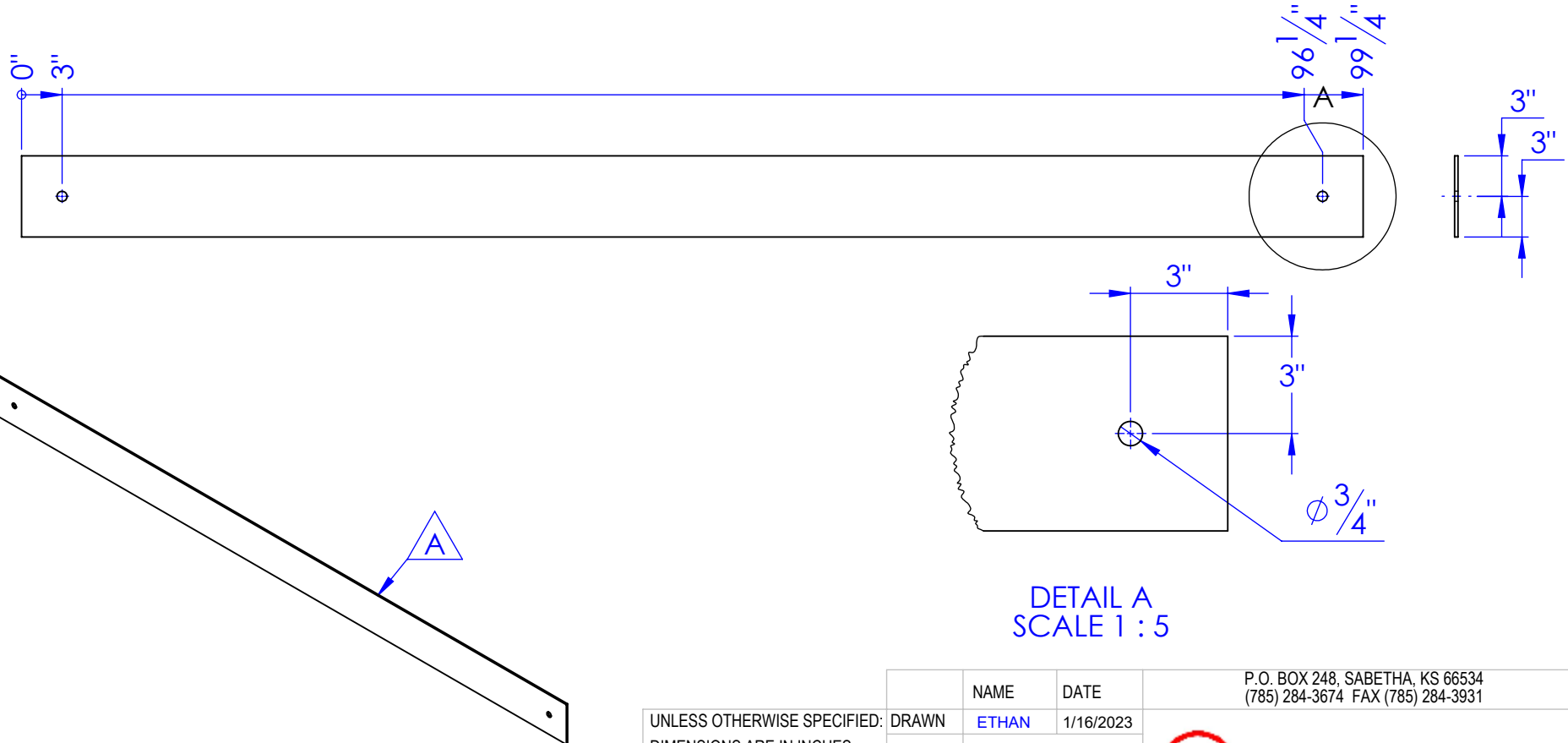


PART NUMBER	DESCRIPTION	Material
ST-RL-FRONT	LENGTH: 99-1/4"	FI 1/4x6

REVISIONS			
REV.	DESCRIPTION	DATE	APPROVED
A	INITIAL RELEASE	4/9/2022	HP (JD)
B	REVISED PART NUMBER TO ST-RL-FRONT FROM FI .25 X 6 L 99.25	1/16/2023	KD (BB)

DRAWING LOCATION:
M:\Drawings\Ethan\Solidworks drawings\12 REEL LIFT\2X00 VENDOR
DWG\2200 Floor

PART LOCATION:
M:\Drawings\Ethan\Solidworks drawings\SOLIDWORKS
MODELS\STOCK\FI




DETAIL A
SCALE 1 : 5

PROPRIETARY AND CONFIDENTIAL
THE INFORMATION CONTAINED IN THIS
DRAWING IS THE SOLE PROPERTY OF
HYDRABEDS. ANY REPRODUCTION IN PART
OR AS A WHOLE WITHOUT THE WRITTEN
PERMISSION OF HYDRABEDS IS PROHIBITED.

UNLESS OTHERWISE SPECIFIED:
DIMENSIONS ARE IN INCHES
TOLERANCES:
FRACTIONAL $\pm 1/16$
ANGULAR: MACH ± 1 BEND ± 1
TWO PLACE DECIMAL $\pm .010$
THREE PLACE DECIMAL $\pm .005$

MATERIAL FI 1/4x6
DO NOT SCALE DRAWING

	NAME	DATE	P.O. BOX 248, SABETHA, KS 66534 (785) 284-3674 FAX (785) 284-3931	
DRAWN	ETHAN	1/16/2023		
PART #	ST-RL-FRONT			
ASM #	Asm #			
COMMENTS:			SIZE DWG. NO. REV A 12-2270 B	
LENGTH: 99-1/4" REEL LIFT FRONT FRAME RAIL			SCALE: 1:20 WEIGHT: 42.16 SHEET 1 OF 1	